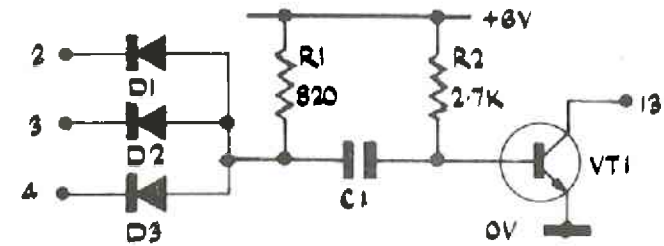


PULSE WIDTH ( $\Delta$ ) =  $C_{TNS}$ . (WHERE  
 C = CAPACITANCE IN pF)

DIODES ARE PURCH 101.  
 TRANSISTORS ARE PURCH 100

LSA.No.	C1
09	470
14	680



+6V ——— 21  
 0V ——— 23

NOTE:-

PULSE WIDTH (+VE). PULSE TRIGGERED BY ANY INPUT  
 REVERTING TO '0' PROVIDING ALL I/P'S HAVE BEEN '1'  
 FOR > N/2 SEC.

I/P 4 - 2.4V REFERENCE VOLTAGE.

DRAWN	CAC	ISSUE No.	1	2	3
CS456		AP No.	1374	1505	1997
DATE	2/11/47		26-4-66	20-6-67	
BY	P.L.C.	DATA	CAC	E.W.C.	

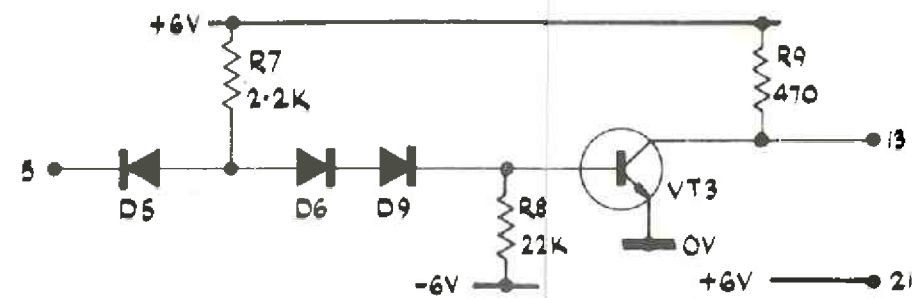
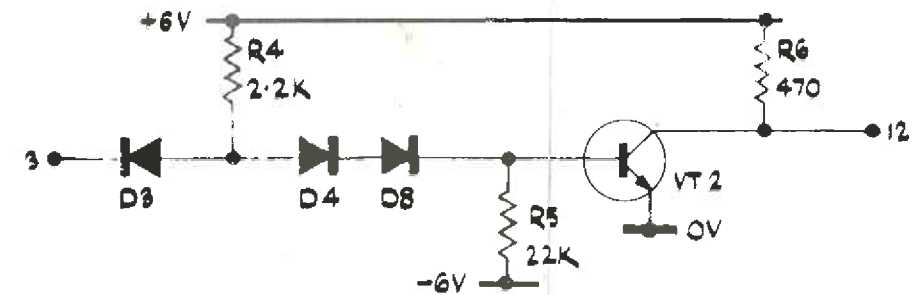
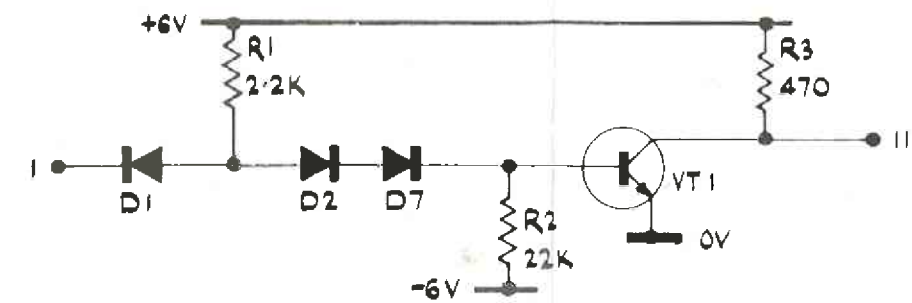
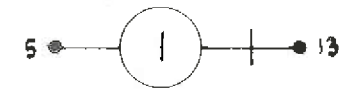
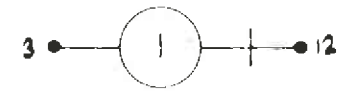
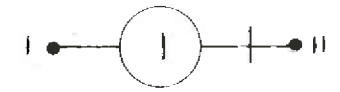
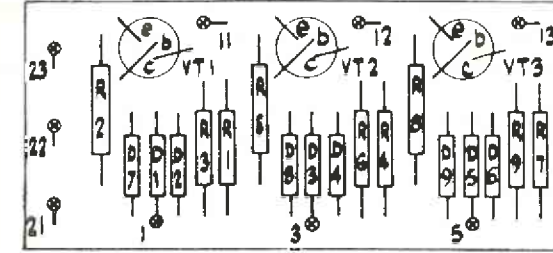
ELLIOTT BROTHERS (LONDON) LTD.

L.S.A. 09, 14.  
 PULSE GENERATOR. 920B

INSTRUCTION SHEET

322A7191

SHEET No 9  
 OF



+6V ——— 21  
 0V ——— 23  
 -6V ——— 22

DIODES ARE PURCH 101  
 TRANSISTORS ARE PURCH 100.

DRAWN	CAC	ISSUE No.	1	2
CS456		AP No.	1374	1997
DATE	2/11/47		26-4-66	20-6-67
BY	P.L.C.	DATA	CAC	E.W.C.

ELLIOTT BROTHERS (LONDON) LTD.

L.S.A. 11  
 CABLE TRANSMITTERS 920B

INSTRUCTION SHEET

322A7191

SHEET No 10  
 OF